

KNXNode III

bus/LAN controller





KNXNode III

PROVEN TECHNOLOGY COMBINING FOUR DEVICES IN ONE

The **KNXNode III** is a powerful, multifunctional KNX module combining several KNX devices in one and therefore a cost-effective solution.

The **KNXNode** is backwards compatible with its predecessors EibNode, KNXNode and KNXNode II. Known as one of the most performant KNX controllers on the market, its potential is now fully unleashed through the integration with the **byNubian cloud services**.

The **KNXNode** is not only a high-performance controller, IP-interface and data logger. In symbiosis with the **KNXVision software**, building visualization has never been so user friendly.

FEATURES

KNX IP-interface

The **KNXNode** can simultaneously be used as a programming interface for accessing the KNX/EIB via IP. This device can be used in ETS3, ETS4 and ETS5.

Assigning the IP-address can be done automatically by a DHCP-server or manually by the free **KNXClient software**.

The **KNXNode** can also be used as a BacNet server-interface.

Line and area coupler

The **KNXNode** covers the full functionality range of a line and area coupler. You're free to combine it with other KNX couplers.

This solution has the advantage to use the fast backbone with a transfer rate of 100MBit/sec. instead of 9,6 kBit/sec.

Logical and time functions

Up to 4000 functions can be processed seamlessly. Using the intuitive **KNXVision studio** (free of charge) your project can be programmed conveniently and easily modified.

Program or parameter errors can be nearly ruled out, using the simulation possibility of the studio where you can follow each and every step.

Some of the more popular functions:

- binary logic (up to 32 inputs/logical block)
- delay/staircase/clock
- gate/scene
- mathematic/hysteresis/transformer
- e-mail/MQTT (IoT protocol)
- TCP/UDP messages

Server for KNXVision

KNXVision is a native KNX product. The software is specifically developed for KNX, the configuration mode is completely in line with the KNX philosophy: simple and effective.

Group addresses are adopted seamless from ETS. Up to 255 KNX-worlds can be integrated in one project. This corresponds to 8.355.840 group addresses!

The status of a KNX control is always displayed immediately. The **KNXNode** knows the status of each and every group address through the use of the unique "status table".

TECHNICAL DATA

- Operating voltage: 10-30 VDC
- Power consumption: <5W
- 9 (bi) color status LEDs
- Rail Mounting device, 4 units

Terminals:

- KNX bus connection block
- Power supply: screw plugin-connector
- RJ45 ethernet 100Mbit

Server for:

- > 4000 logical functions
- BloT (through **byNode**)
- **KNXVision** visualization

KNXVision

MULTIPLE KNX INSTALLATIONS AT A GLANCE

KNXVision comes with an extensive library of logical and visualization elements. You can create your own buttons or elements, creativity without limits!

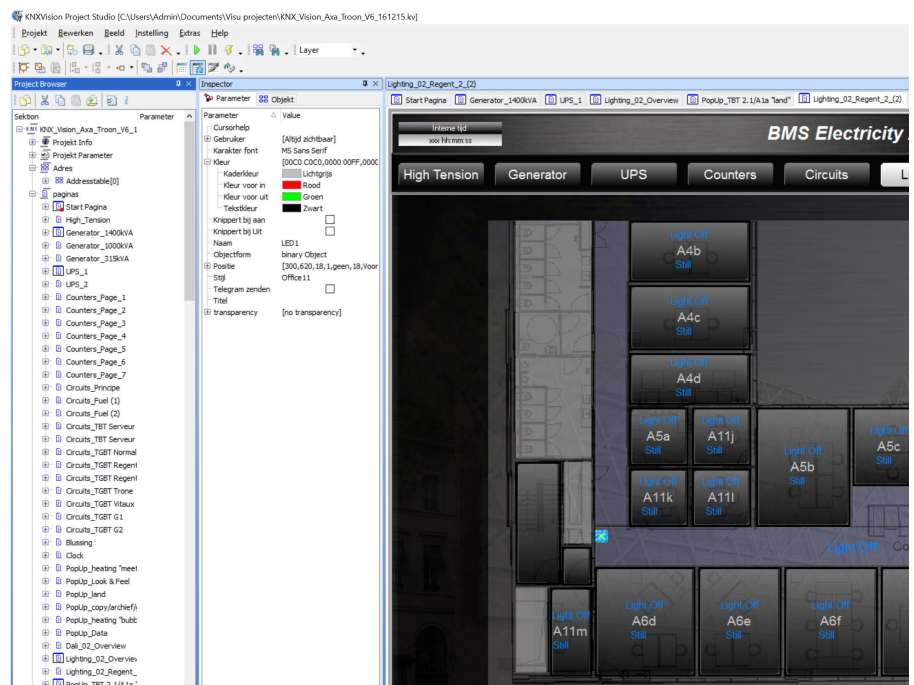
You can assign group addresses simply by drag and drop, just as your ETS software. The end user will enjoy an extremely comfortable operation, there is no initialization time. Access rights can be allocated, each with its own homepage and access to specific screens.

The **KNXVision** philosophy is simple and transparent. There are no restrictions in terms of number of pages, elements or screensize. Whatever the size of your project is, the intuitive user experience stays the same.

Visualization in four steps

1. Start a project and import the project information from ETS.
2. Drag and drop the desired elements to build your pages. There are tools for making this easy (alignment, grids, levels, transparency, ...).
3. Allocate the appropriate group addresses to the elements and edit the parameters.
4. Send the project to the **KNXNode**. All logical functions are now handled by the node.

Enjoy your state of the art visualization on any device.

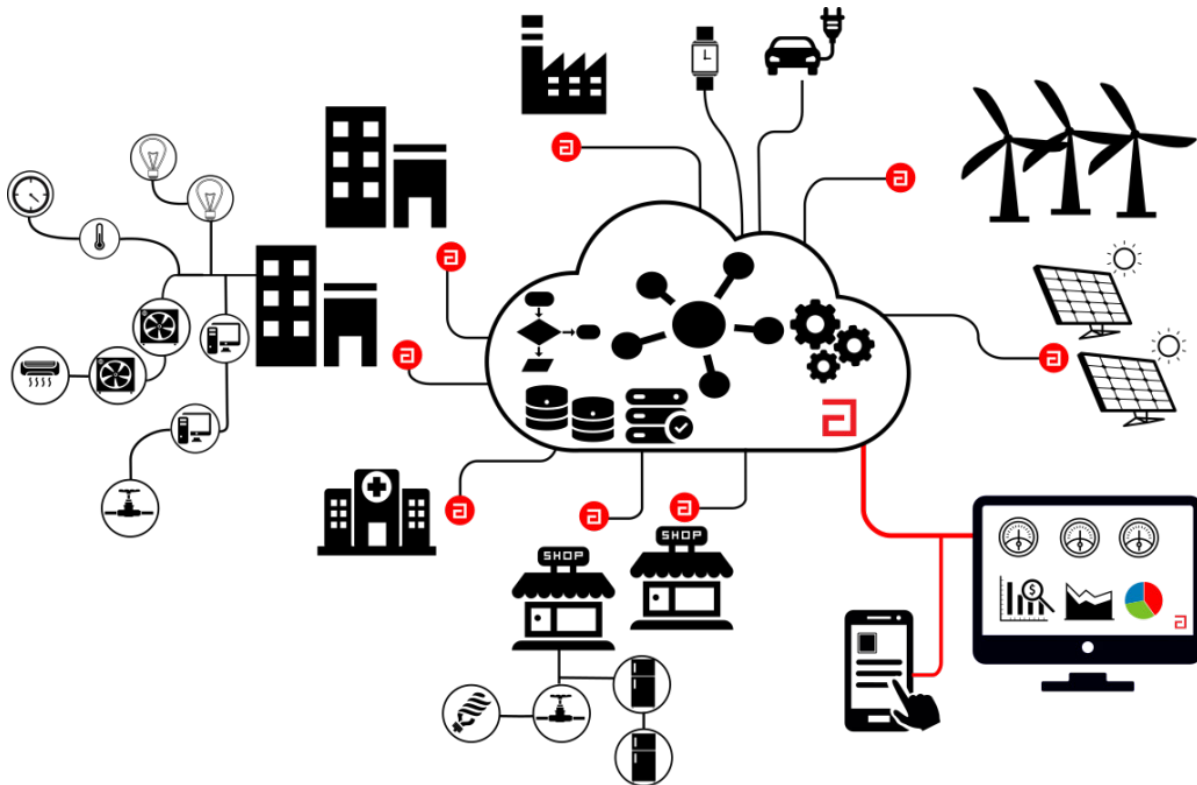


byNeuron cloudplatform








MASTER BUILDING MANAGEMENT SYSTEM

The **byNode** is a powerful, multifunctional gateway that connects existing building solutions (KNX, ModBus, BACnet) and the newest Internet of Things sensors (LoRaWan) in a completely secure way to the **byNeuron** cloudplatform. The **byNode** is a performant datalogger compatible with the **KNXNode III**.

The **byNeuron** cloudplatform takes care of secured data storage, protocol translation, event routing and bi-directional control and offers various software applications to monitor, analyze and improve the performance of your activity.



OTHER byNUBIAN PRODUCTS

 Building measurement & configuration	0100101 1000101 0010110 Data capturing	 Building monitoring	 Building intelligence	 Building analytics	 Building control	 Building automation
 KNXNode KNXVision...	byNNode gateways & sensors KNX-Modbus-Mbus- Lorawan...	Busmonitor	Intelligence & dashboards	Analytics, patterns, ref data	Control & access	Automated control & alerting services
byNeuron event factory & cloud platform						
API's (MQTT, rest) & connectors (eg for PowerBI)						

